

A large, faint, stylized graphic in the background of the slide. It features a dark blue circle at the top, representing a sun or moon, and a dark blue mountain range below it. The entire graphic is rendered in a lighter shade of blue against the dark blue background.

Building Climate Resilience Together: *Intersectoral Community Actions to Adapt to a Changing Climate*

The Association of Kootenay and Boundary Local Governments

April 20, 2024

Introductions



Julian Mallinson
Interior Health



Dr. Sue Pollock
Interior Health



Kady Hunter
Interior Health



Andre Bloemink
HEMBC/Interior
Health



Mayor Colleen Jones
City of Trail



Paris Marshall Smith
Regional District of
Central Kootenay



Outline

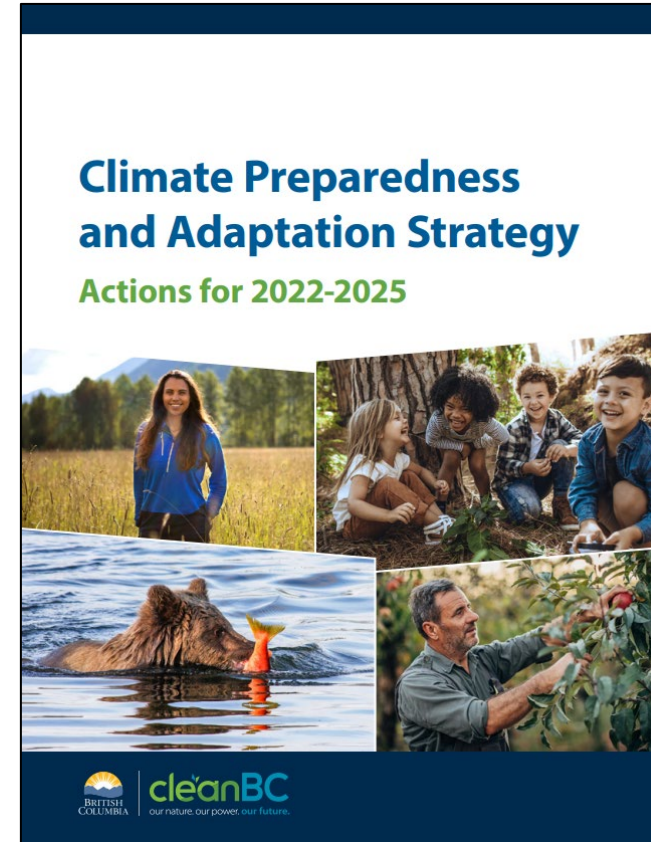
- IH Perspective on Climate Change and Health
- Collaborative Work in the City of Trail
- Climate Action in the Regional District of Central Kootenay
- Panel Discussion



IH Perspective on Climate Change and Health



Provincial Priorities



Interior Health Direction



Medical Health Officer Report



Introduction | Case for Change | **Climate Hazards**
Extreme Heat | Cold Weather
Floods | Wildfires and Smoke | Drought

Co-benefits of Climate Action on Health and Well-being | Recommendations

Climate Hazards and Actions

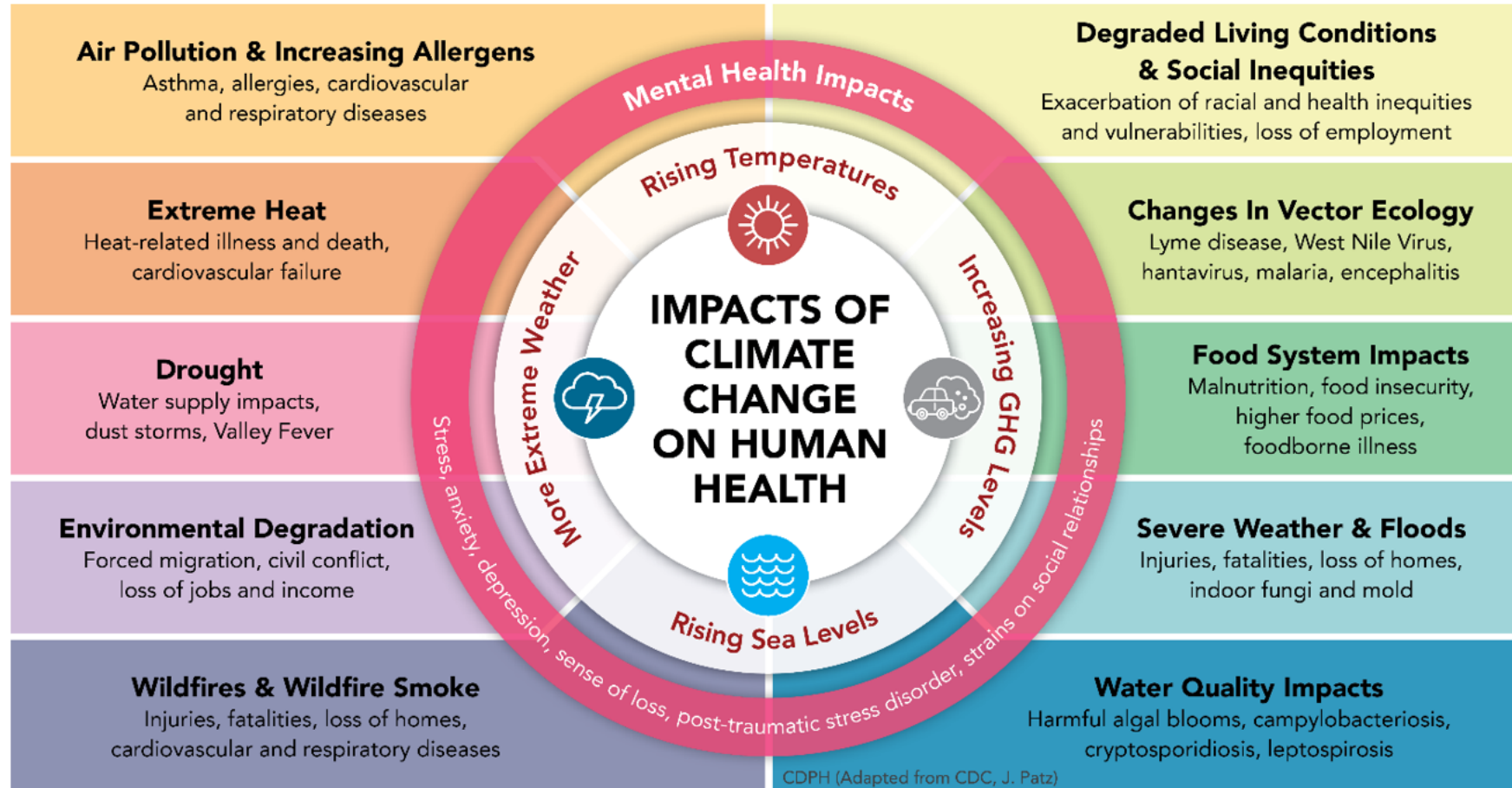
IN THIS SECTION:

Extreme Heat	16
Cold Weather	23
Flooding	28
Wildfires and Smoke	35
Drought	36

"We were away from our home for months first because of the wildfire in summer 2021 and then months later because of the floods. The loss of ceremonies affected our family and community, and we weren't able to come together in a way we are used to."
– *Nlaka'pamux Elder*



Climate Change Hazards & Health Impacts

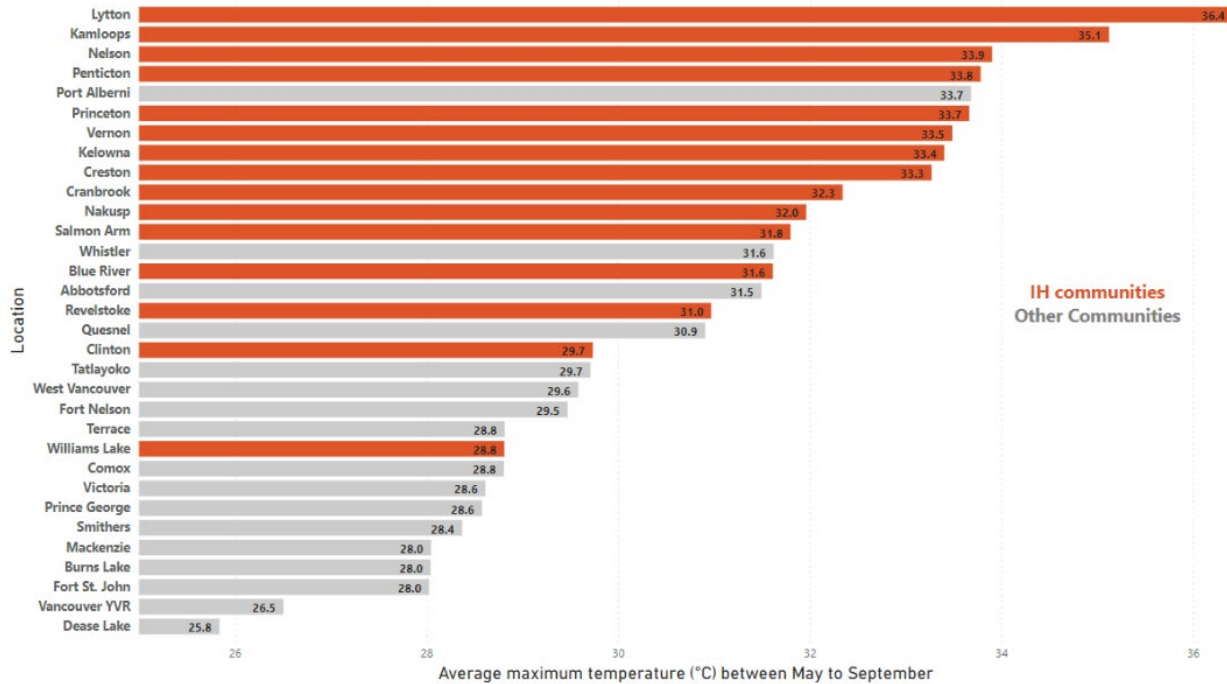


Source: *Impact of Climate Change on Human Health (Adapted from CDC)*

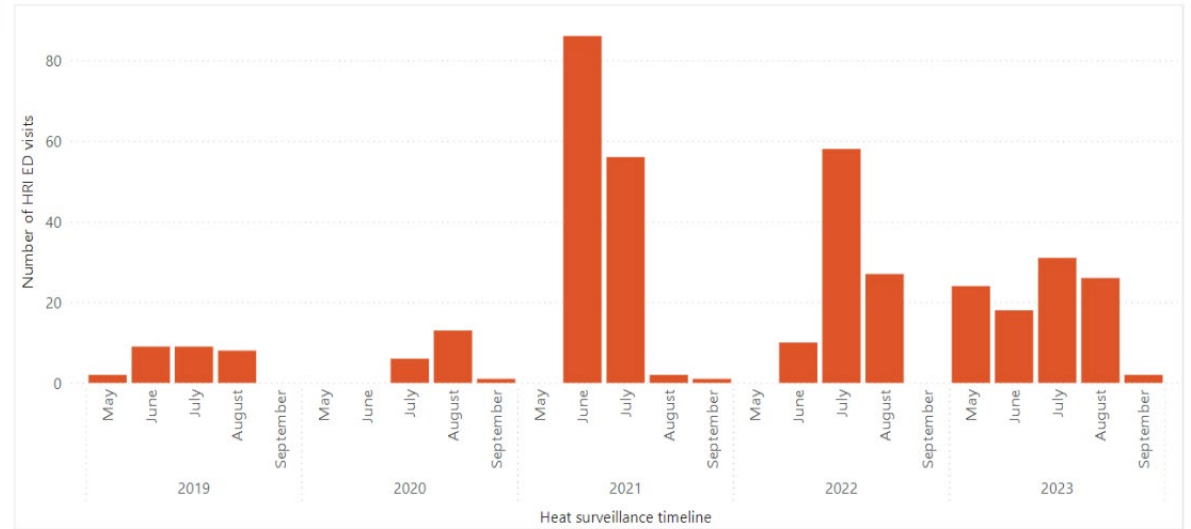


Heat in the Interior Health Region

Communities in BC ranked from high to low for average maximum temperature recorded between May to September



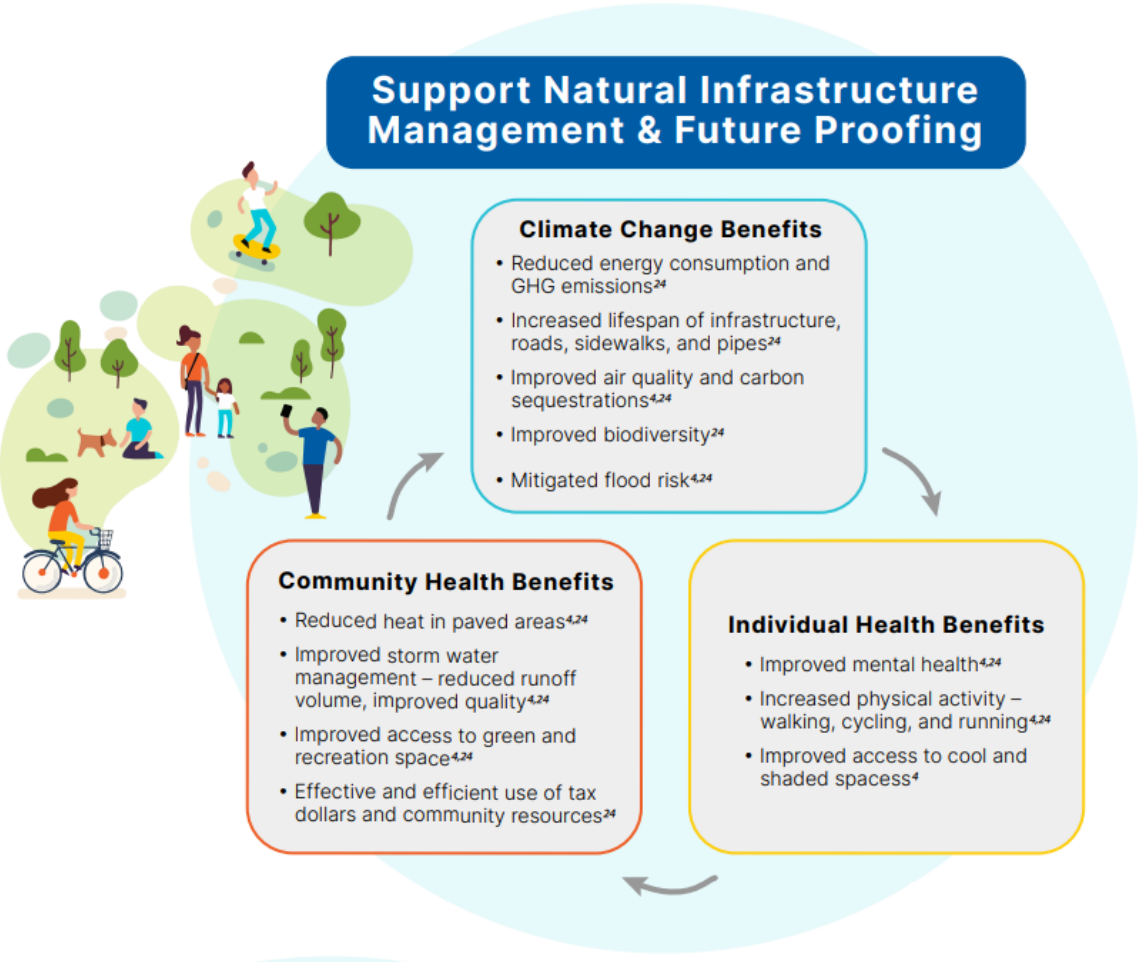
Number of heat-related illness emergency department visits at IH sites between May and September in the last five years



Note: ED visits related to heat-related illnesses were based on a presenting complaint with a CEDIS code of "207-Heat-related issue".



MHO Report : Multiple Benefits for Individuals and Communities

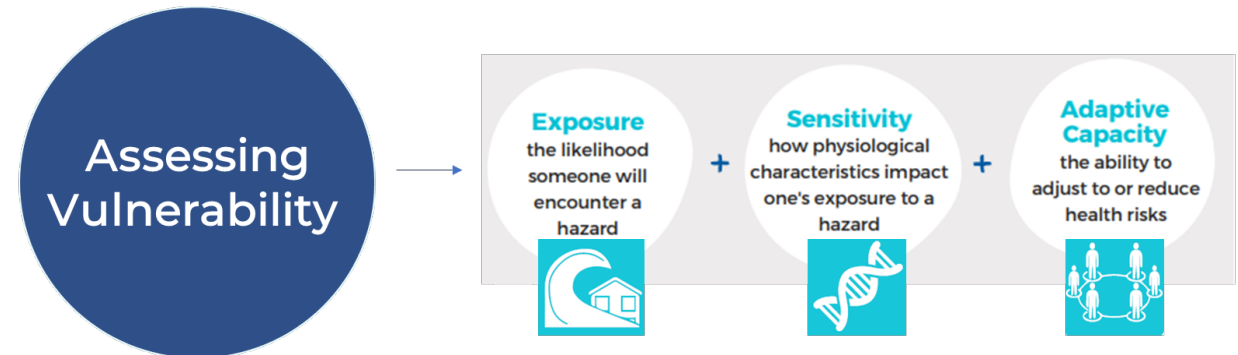


City of Fernie – Annex Neighbourhood Active Transportation and Flood Mitigation Project



MHO Report: Recommendations

- Interior Health
- Provincial Partners
- Community Partners



- Support Indigenous-led actions to adapt to climate change and protect the natural environment.
- Partner with IH on **climate change and health vulnerability and adaptation assessments**, including implementation of adaptation plans.
- Work in partnership with IH and other partners on extreme heat, cold, flooding, drought, wildfire and smoke preparedness and response that will help ensure health and well-being for all citizens.
- Endorse policies and programs that build on community assets and promote the co-benefits of climate action on health and well-being.





How is climate change impacting you or your work?

Join at menti.com

Code: 5643 9212



Collaborative Work in the City of Trail





Greece and its governance in an increasingly uncivil society the notion of "love thy neighbour," once anchored in biblical and secular culture, has been replaced in many boardrooms by a spirit of "what's in it for me?" I commend it to you.
GEORGE B. CUFF, FCMC

Order online now at
books.municipalworld.com

MUNICIPAL WORLD BOOKS

www.SaveYourMunicipalWorld.com

CITY
HOW TOXIC CULTURE KILLS COMMUNITY & WHAT TO DO ABOUT IT
SPECIAL MUNICIPAL WORLD EDITION
Includes foreword by George B. Cuff, FCMC, plus Companion Workbook

me?" I commend it to you.
GEORGE B. CUFF, FCMC

Order online at
books.municipalworld.com

MUNICIPAL WORLD BOOKS

www.SaveYourMunicipalWorld.com

CITY
HOW TOXIC CULTURE KILLS COMMUNITY & WHAT TO DO ABOUT IT
SPECIAL MUNICIPAL WORLD EDITION
Includes foreword by George B. Cuff, FCMC, plus Companion Workbook

AKBLG
Terry
City of Trail

AKBLG
Do

AKBLG
Bev
City of Trail

AKBLG
Colleen
City of Trail

AKBLG
Pat

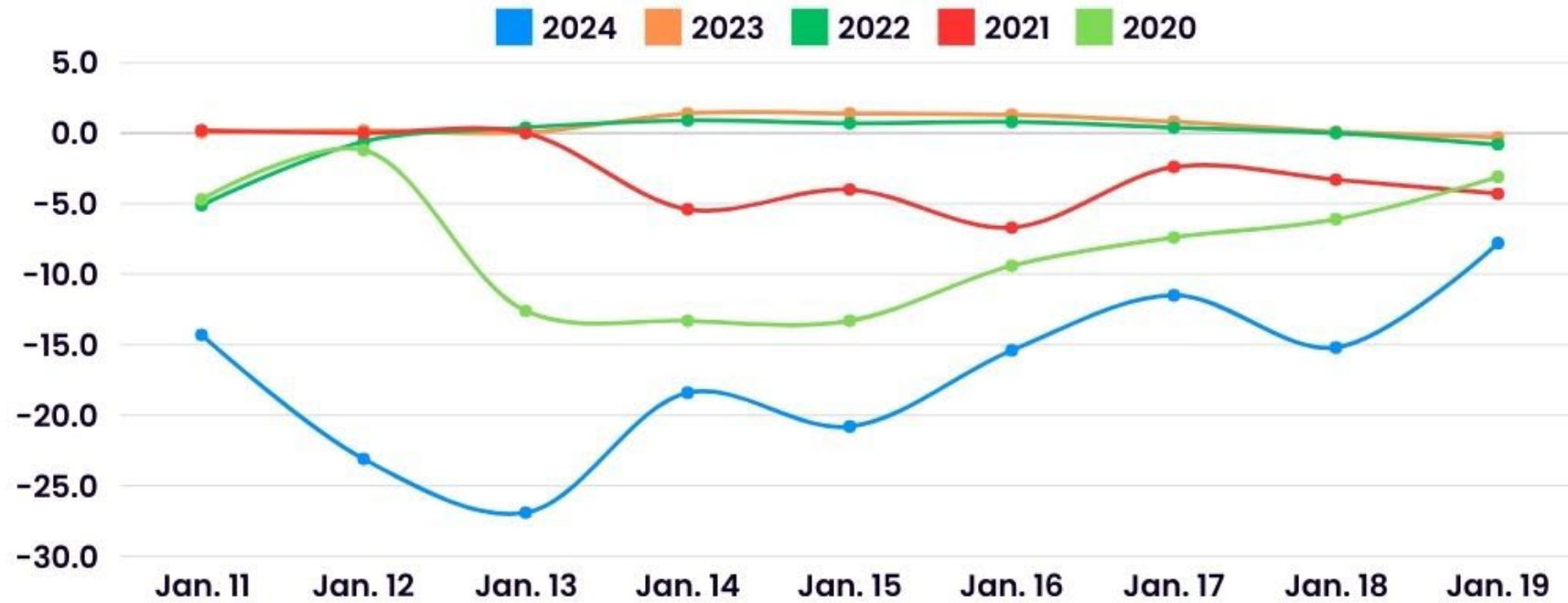
AKBLG
Pat

AKBLG
Nick
City of Trail

AKBLG
ASSOCIATION OF KOOTENAY & BOUNDARY LOCAL GOVERNMENTS



5-year temperatures in Trail



Explore your
TRAIL





Donations to the
Trinity Episcopal Church
Fund Raiser

The Twelve Steps
1. WE ADMITTED WE WERE POWERLESS OVER ALCOHOL. 2. WE BELIEVED THAT A POWER BEYOND OURSELVES COULD RESTORE US TO SANITY. 3. WE MADE A DECISION TO TURN OUR LIVES OVER TO THE CARE OF GOD AS WE UNDERSTOOD HIM. 4. MADE A SEARCHING INVENTORY OF OURSELVES. 5. ADMITTED TO GOD TO OURSELVES AS BEING THE EXACT NATURE OF OUR WOUNDS. 6. WERE OPENED UP TO RECEIVING DIRECTLY FROM GOD THE CHARACTER WE WISHED TO HAVE. 7. BECAME WILLING TO MAKE AMENDS TO THE PERSONS WE HAD HARMED IN WHATEVER POSSIBLE MANNER. 8. WHEN TO DO SO AMENDS TO SUCH PEOPLE WHOEVER POSSIBLE. 9. BECAME WILLING TO TAKE PERSONAL INVENTORY AND WHEN OTHERS WERE CONTINUED TO TAKE PERSONAL INVENTORY AND WHEN NECESSARY ADMITTED TO THEM. 10. SOUGHT THROUGH PRAYER AND MEDITATION TO BE CONSCIOUSLY IN CONTACT WITH GOD AS WE UNDERSTOOD HIM. 11. HAVING AWARENESS AS THE RESULT OF THESE STEPS, WE TRIED TO CARRY THEM TO ALL ALCOHOLICS AND TO PRACTICE THESE PRINCIPLES IN ALL OUR LIVES.

Today
is the
first day
of the
rest of your
life.









Climate Action in the Regional District of Central Kootenay





1

External context

2

RDCK Climate Actions – our response

3

The impact

4

What we learned



1

External context

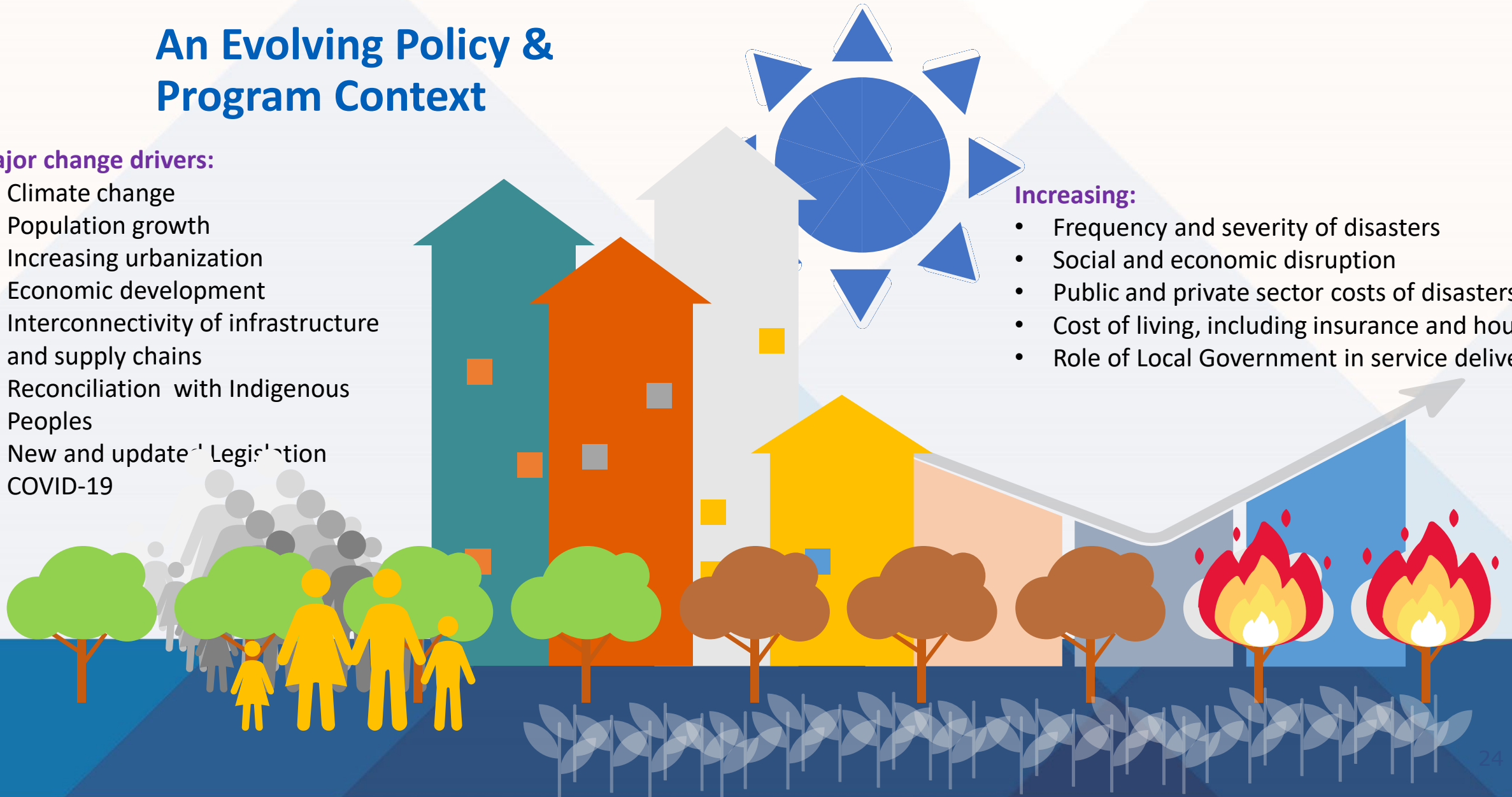
An Evolving Policy & Program Context

Major change drivers:

- Climate change
- Population growth
- Increasing urbanization
- Economic development
- Interconnectivity of infrastructure and supply chains
- Reconciliation with Indigenous Peoples
- New and updated Legislation
- COVID-19

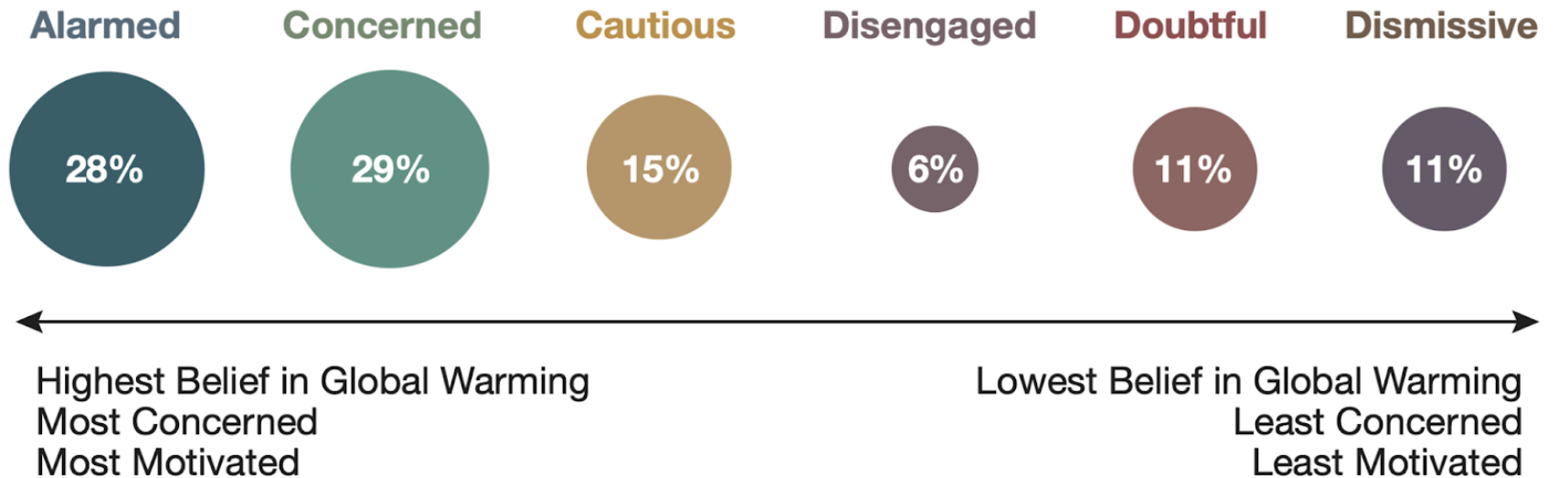
Increasing:

- Frequency and severity of disasters
- Social and economic disruption
- Public and private sector costs of disasters
- Cost of living, including insurance and housing
- Role of Local Government in service delivery





Spectrum of concern & motivation



Global Warming's Six Americas, Fall 2023

Base: 1,033 U.S. adults

Source: Yale Program on Climate Change Communication;
George Mason University Center for Climate Change Communication

Finding	2019	2021	2023
Worried to some degree about the impacts of climate change	68%	79%	74%
Indicated they would have neighbours, friends or family support during an emergency (ex: forest fire or flood)	94%	91%	84%
Perceived impacts of climate change in their community on a regular basis	64%	74%	78%
Indicated climate change is a problem to some degree	34%	48%	67%
Indicated extreme weather events are a problem to some degree	19%	37%	45%

State of the Basin Subjective Well-being





2

RDCK Climate Actions – our response

rdck.ca

Our Changing Climate

Increase frequency, intensity, and cost of cascading and compounding natural hazards



Addressing the Crisis

Climate Change Adaptation

Disaster Risk Reduction



RDCK Community Sustainability Department

Sustainability & Energy Efficiency Program

Emergency Management Program



RDCK Climate Actions



3,518 COMMENTS



3

The impact

News / Local News

Climate action open houses shuttered in Nelson due to safety concerns

Protests against 15-minute cities concept at heart of cancellation

David Carrigg

Published May 18, 2023 • Last updated May 19, 2023 • 2 minute read

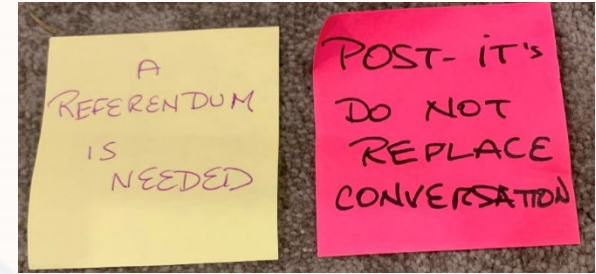




Out of scope

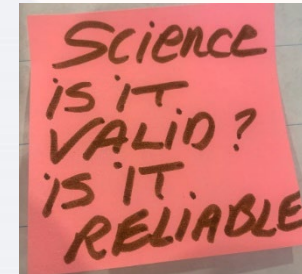
Engagement process

Residents sought more input through a referendum, town halls, and increased opportunities for expression. Views on the engagement model varied.



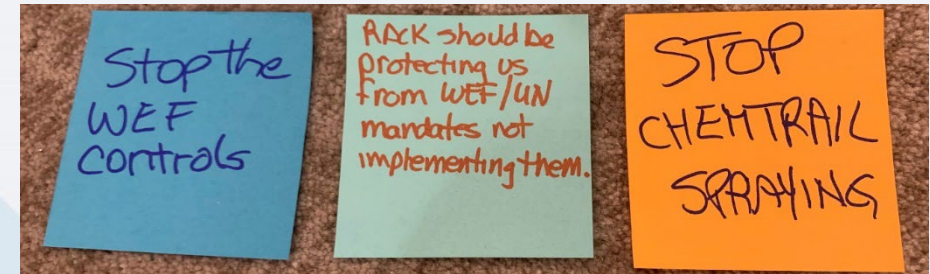
Discussion of climate science

Some residents acknowledged the reality of a changing climate, while others did not.



Concerns about external forces

Some residents are concerned the RDCK is being controlled by external forces, such as the Provincial and Federal government, the United Nations and the World Economic Forum.



Note: These topics include comments in support and opposition. These comments were roughly ¼ of the total comments received.

TRANSIT AND ACTIVE TRANSPORTATION

EMERGENCY PREPAREDNESS

SUPPORT FOR FARMERS

STEP CODE & RETROFIT

WATER PROTECTION & CONSERVATION

ELECTRIC VEHICLES

RENEWABLE ENERGY

GRID RESILIENCE

**RESIDENT HOT TOPICS
FOR RDCK CLIMATE
ACTION**



4

What we learned



Ideally future RDCK Climate Action will reflect:

- Clarity of volunteer and required actions
- Clear and direct communication
- Looking for local solutions
- Need for increased resilience
- Interest to work together
- Shared values





Ideally climate action will:

- Support the difficult conversations
- Support an understanding of our common feelings of fear and anxiety about a changing world
- Inspire a vision that serves all beings
- Recognize our collective capacity





What are you doing in your community to adapt to climate change and build resilience?

Join at menti.com

Code: 5643 9212



Panel Discussion and Q&A

